

EKP IV Pro Aeronautical Navigator

AvMAP

SATELLITE NAVIGATION



NEW MAPS!

- Americas
- Europe + Africa
- Asia + Australia
- Worldwide
- Jeppesen Data
- Marine Objects
- Low Airways
- TAWS
- Private Airports

YOUR Journey,
OUR Technology.

7" LCD sunlight-viewable display,
operating in horizontal or vertical mode



Preset Search and Rescue Patterns:
EXPANDING SQUARE,
CREEPING LINE AHEAD and CIRCULAR



Jeppesen aeronautical data + customized
regional terrestrial Tele Atlas data



Access to detailed Tele Atlas street data,
search for an address with country, city and
street and set it as destination



Connection to the radio localization system
(Telefix or APRS devices)



The AvMap EKP IV Pro (Electronic Knee Pad) belongs to the new generation of portable navigation systems for the aeronautical market. EKP features a 7" colour LCD display, brilliant and sunlight-viewable, and it is equipped with internal batteries for emergency use. The unit can operate in Portrait or Landscape mode. You can choose to view the full map or split HSI screen with data fields or full nave data.

EKP IV Pro utilizes a 4 GB Compact Flash memory card (CF) preloaded with software and maps. The cartography is fully detailed and integrates regional street data from Tele Atlas and Jeppesen aeronautical data (for Europe or America, Asia, Australia, Africa depending on the version).

With the new software release, EKP IV Pro is even more complete. EKP IV Pro now includes the Private Airports database (for US) and Low Airways (a.k.a Victor Airways in the USA). The five existing types of airways have been added to the SELECTIVE DISPLAY: Airline Airway, Control Airway, Direct Route Airway, Official Designated Airway, RNAV Airway. A color coded map shows info on the terrain altitude (land elevation), and the TAWS shows the separation existing between the terrain and the airplane.

PRO UPGRADE KIT

Find out how to upgrade your EKP IV to Pro:
Visit www.avmap.it.



Tele Atlas Maps

EKP IV Pro

Software special functions

- Full flight planning capability (up to 15 flight plans of up to 100 legs each)
- Possibility to import and export flight plans, waypoints and routes directly from EKP to the PC through a serial port thanks to the PC-Planner software.
- Editable aircraft checklists
- Full simulator functions
- Integration with other on-board navigation systems: autopilot, GPS, external antenna
- NEW: TAWS - Terrain Awareness and Warning System available worldwide. The TAWS rules allow depicting with a proper colour scheme the separation existing between the terrain and the airplane. TAWS take as reference the Land Elevation value (the value of the terrain altitude in respect of the sea level). The TAWS rules allow calculating the colour scheme to be used for depicting the OCH, Obstacle Clearance Height.

Pro functions:

- Software languages: English, Italian, French, German, Spanish, Polish, Portuguese.
- Search and Rescue flight patterns
- Customized Regional terrestrial coverage
- Address Research
- Connection to the radio localization system (Telefix and or Kenwood APRS) *

* Special Project

HARDWARE

Dimensions

Size :180.3 mm x 121.9 mm x 45.72 mm (7.1" x 4,8" x 1,8")
Weight: 800 g

Display

Color LCD TFT 7" (16:9) 4.75" x 7" x 1.5"
Resolution 800 x 480 pixels

GPS Antenna

Internal 20-channel GPS receiver supporting WAAS signals
3" diameter, 0.625" height (76.2 mm diameter, 15.9 mm height)
The antenna includes a 5 meter cable.

Memory

Non volatile with battery back-up

Keyboard

Backlighted, silicon rubber

Power supply

10/35 V DC external power
6 rechargeable NiMH internal battery for emergency use
(up to 1.5 hours)
Consumption 10 Watt

Operating Temperature Range

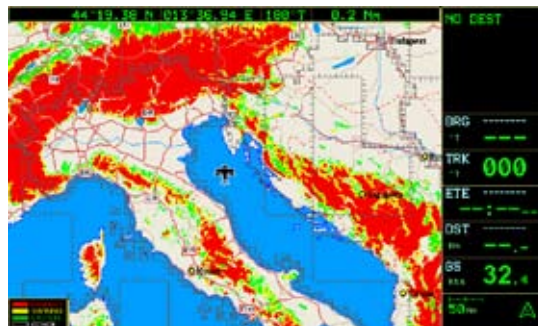
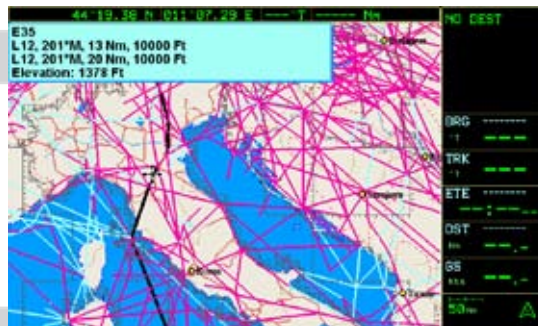
0°C to 55°C (32°F to 131°F)

Storage Temperature

-25°C to 70°C (-13°F to 158°F)

Interface

Serial I/O port: 4800 up to 38.400 baud rate



EKP IV Pro Aeronautical Navigator

Cartography

Americas (North, Central, and South America) + North America terrestrial data (Tele Atlas)

Europe and Africa + European Terrestrial data (Tele Atlas)

Asia and Australia

Worldwide + terrestrial data (Tele Atlas) for Europe and North America

Distributed by:

Aerotara Inc.
Ottawa, ON
613-226-6216
www.aerotara.com

AVMAP
SATELLITE NAVIGATION

Made in Italy

AvMap srl, via Caboto, 9
54036 Marina di Carrara (MS) ITALY
www.avmap.it - info@avmap.it